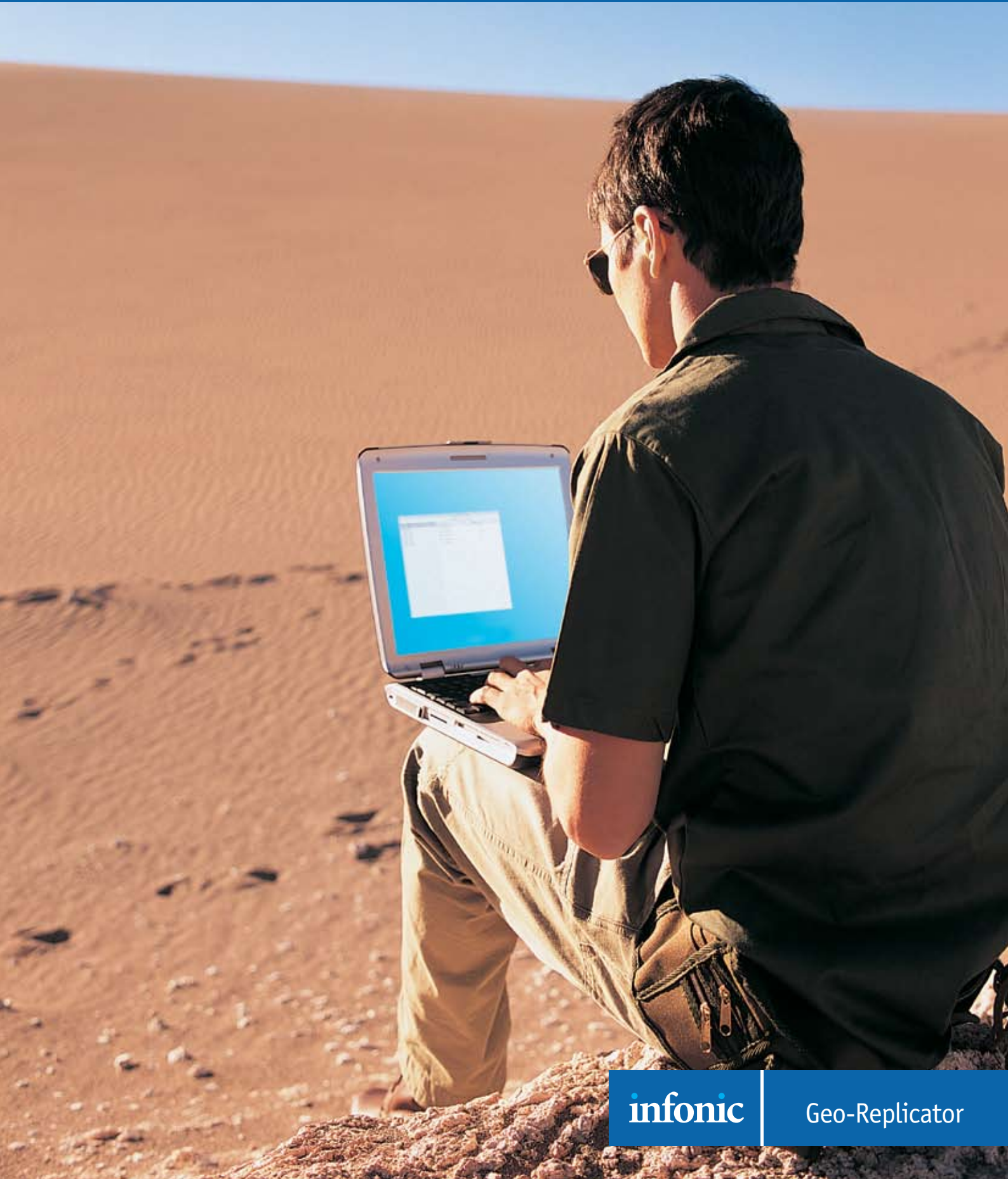


NETWORK CRITICAL BUSINESS AS USUAL. ONLINE. OFFLINE. WORLDWIDE.



infonic

Geo-Replicator

INTRODUCING INFONIC GEO-REPLICATOR.

FOR GLOBAL ORGANISATIONS WITH CRITICAL NETWORK CHALLENGES (PROBABLY ALREADY DEPLOYING MICROSOFT SHAREPOINT™), YOUR WAN WORKS LIKE A LAN WITH GEO-REPLICATOR.

Put simply, Infonic Geo-Replicator replicates SharePoint, and other content, between the servers at your global HQ, and your remote servers and laptops worldwide, to provide uninterrupted access to up-to-date business information for all your global users.

Geo-Replicator overcomes the inevitable continuity problems encountered by global business networks, such as latency, narrow bandwidth and sporadic connectivity, to ensure business as usual 24/7.

Small wonder it is already deployed by some of the foremost continuity-critical global organisations on land, at sea, and in the air.

THE GEO-REPLICATOR SUITE INCORPORATES TWO SOLUTIONS:

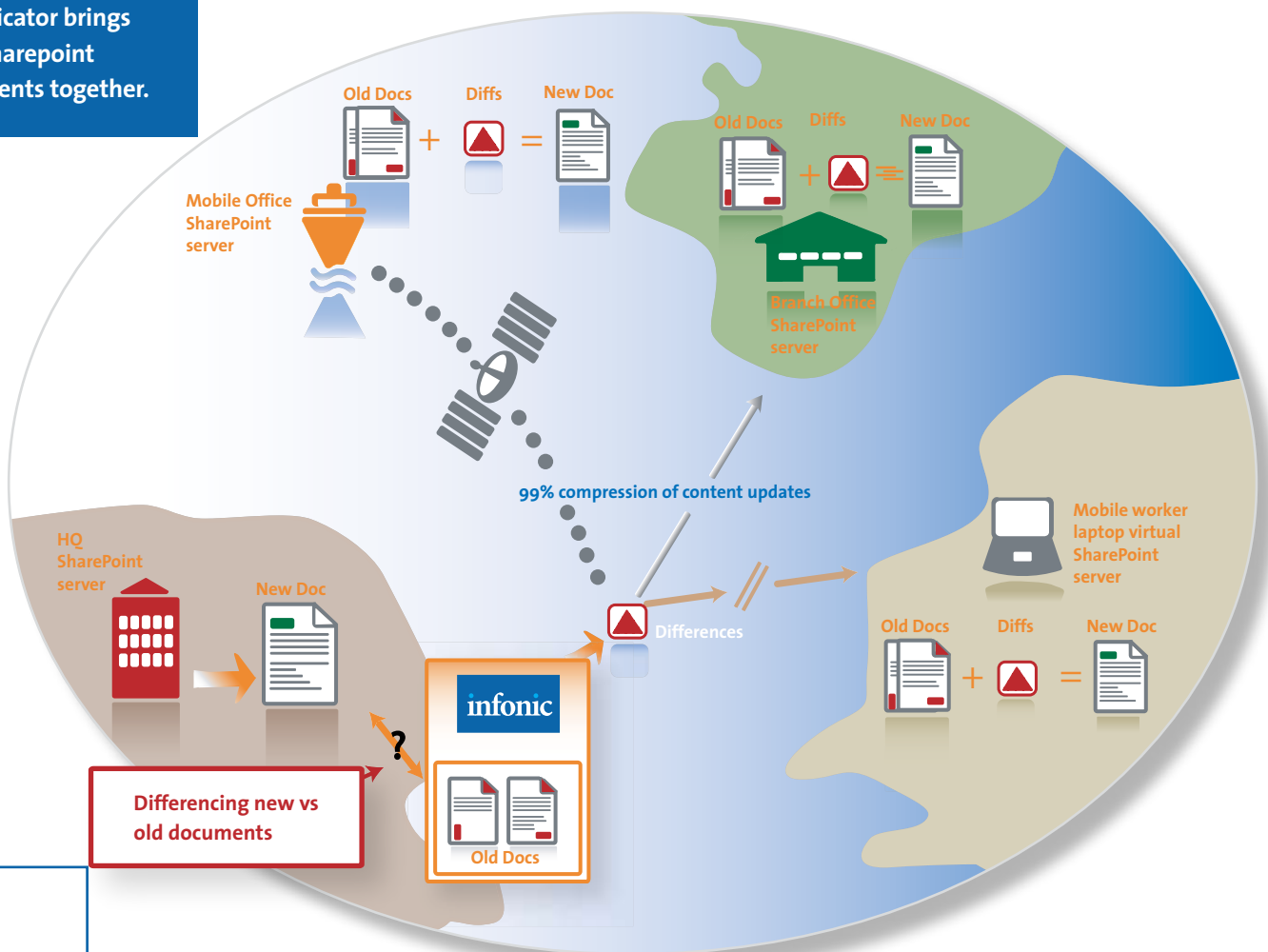
► GEO-REPLICATOR SERVER TO SERVER

Geo-Replicator's Server to Server solution uses Epsilon, a patented byte-level differencing technology, to reduce transmission times of new portal content, each way, by up to 99%.

In a nutshell, this means that WAN users at remote locations have the same instant document access as LAN users at your corporate HQ - dramatically improving productivity across the enterprise.

For distant office workers, or personnel dependent on remote servers, it's as if they were working on the headquarters LAN. Local server replication provides business continuity and LAN-speed access, in SharePoint or other web applications, even when connection to the central server is completely lost.

Geo-replicator brings global SharePoint deployments together.



► **GEO-REPLICATOR SERVER TO LAPTOP**

Laptop users in the field are able to maintain productivity offline, despite instances of no or poor connectivity with Geo-Replicator.

By creating a replica of portal content (such as SharePoint Team sites) on their laptop, Geo-Replicator provides users with uninterrupted access to critical information

Every portal link works, documents are automatically updated, and full search and access rights are enforced, offline.

Replication can be two-way, allowing the disconnected user to modify documents and list items while offline, so that once a connection to the server is regained, content is automatically updated at the central server.

SCALABILITY, COMPATIBILITY AND USABILITY

Geo-Replicator is highly scalable, able to support tens of thousands of users,

and terabytes of replicated content. It is widely compatible, and integrates with existing security infrastructure.

Through Infonic's Web Virtualisation technology, Geo-Replicator also ensures worldwide replication of other web and file-based content for Intranet, Lotus Domino, or web-based applications

It supports any network type from low-bandwidth dial-up to WANs using intermittent satellite connection, as well as both Windows SharePoint Services and Microsoft Office SharePoint servers.

Online or offline, Geo-Replicator gives users the same familiar and user-friendly SharePoint interface – eliminating any need for user training.

GEO-REPLICATOR VERSUS STANDARD COMPRESSION. NO CONTEST.

Epsilon technology totally eclipses standard compression technologies because it never sends the same

information twice. Rather, it retains a memory of the information (at the byte level) that it has transmitted to each server in the past.

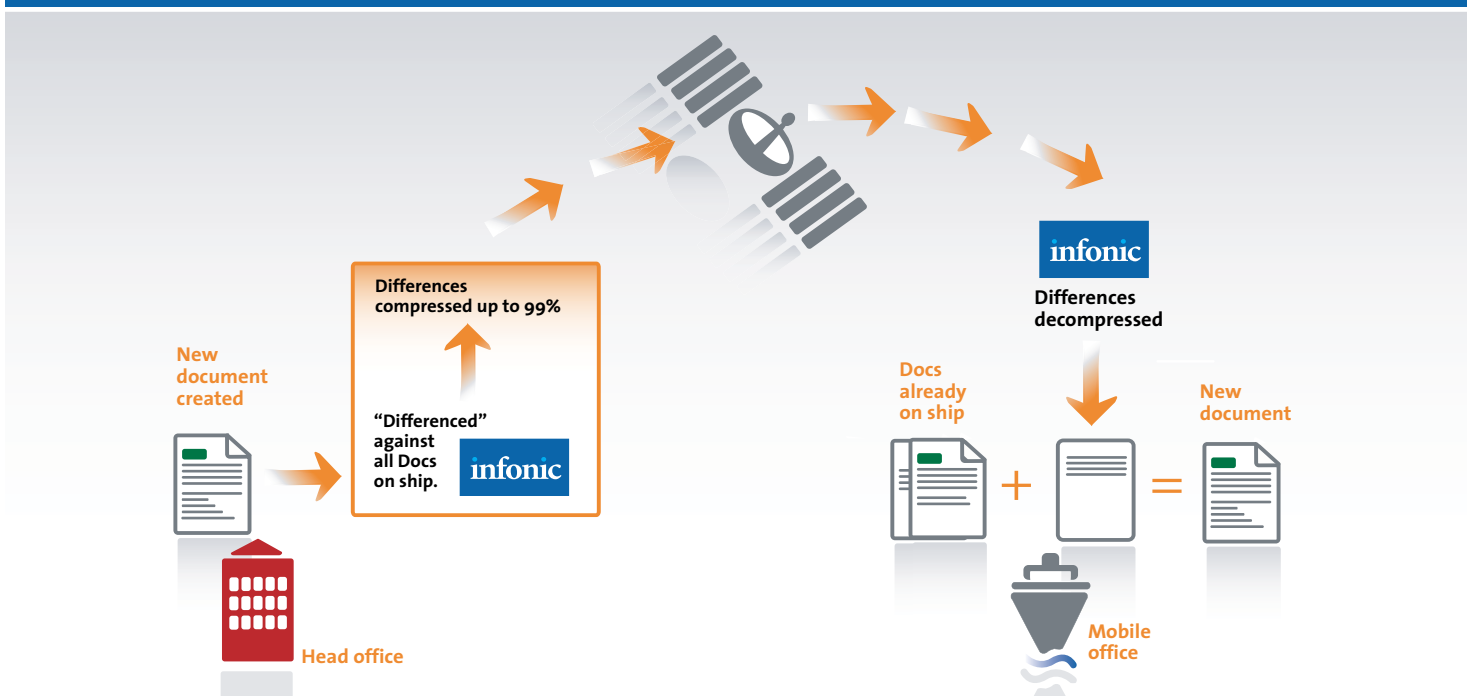
So, when a user creates a new shared file, which contains byte patterns, such as graphics, which Epsilon recognises as already being in other documents on the remote servers, it simply sends instructions to the remote servers to reuse the existing byte patterns, to create the new file..

No other network acceleration solution, hardware or software, tackles the problem with this unique combination of local content virtualisation and differencing of transmissions.

Typically Epsilon delivers over 90% compression of portal content updates.

When you need uninterrupted productivity, global connectivity and collaboration 24/7. It has to be Infonic Geo-Replicator.

Patented Epsilon differencing technology



INFONIC GEO-REPLICATOR, ENABLING GLOBAL ENTERPRISE

CELANESE

A major global chemical company based in Dallas, Texas, operates across 5 continents. Having deployed Microsoft SharePoint as their enterprise-wide document management and collaboration solution, Infonic Geo-Replicator has been deployed to give the Celanese sales team portal access via their laptops, even when they are on the road.

DREDGING INTERNATIONAL

The global leader in dredging and land reclamation, with vessels deployed from France to India, Singapore, Australia and Uruguay, was obliged by international regulations to hold current Health & Safety documentation on all vessels. To minimise satellite data costs, Geo-Replicator was deployed, alongside SharePoint, across the fleet with remarkable results - 98% data compression meant a 98% saving on satellite costs.

CHRISTIAN AID

This renowned aid agency, with operations in 60 of the world's poorest and most remote countries, uses Geo-Replicator in combination with Microsoft SharePoint to provide field operatives with continuous offline access to the vital information they need to manage situations and make decisions.

MILITARY DEPLOYMENTS

Infonic provides network acceleration and offline SharePoint replication for the world's largest military organisations including the US Navy, the US Army and the UK Ministry of Defence. Geo-Replicator is enabling terabytes of mission critical information to be rapidly synchronized to remote servers and laptops, at sea or with deployed ground units, providing continuous offline access. With the help of Geo-Replicator, the US Navy's Distance Support SharePoint portal is continuously updated over high latency satellite networks across the entire fleet.

**For further information
about Infonic Geo-
Replicator, and how it
enables global enterprises
to ensure optimum
continuity, connectivity,
mobility and collaboration
visit our website at
www.infonic.com**



infonic

Geo-Replicator

Infonic (UK) Ltd

4 Stirling House,
Stirling Road
Surrey Research Park
Guildford, Surrey GU2 7RF
t +44 (0)1483 443 000

www.infonic.com

Infonic Inc.

11951 Freedom Drive
Suite 1130
Reston, VA 20190
t +1 (703) 659-1900

Singapore

10 Science Park Road.
#03-27, The Alpha
Singapore Science Park II
Singapore 117684
t +65 6777 9884

Germany

Chilehaus A
Fischertwiete 2
D-20095 Hamburg
t +49 171 9941342